

COASTAL TOOLS FOR ENGINEERS, SCIENTISTS, AND PLANNERS ON CD-ROM

Timesaving solution to coastal problems...

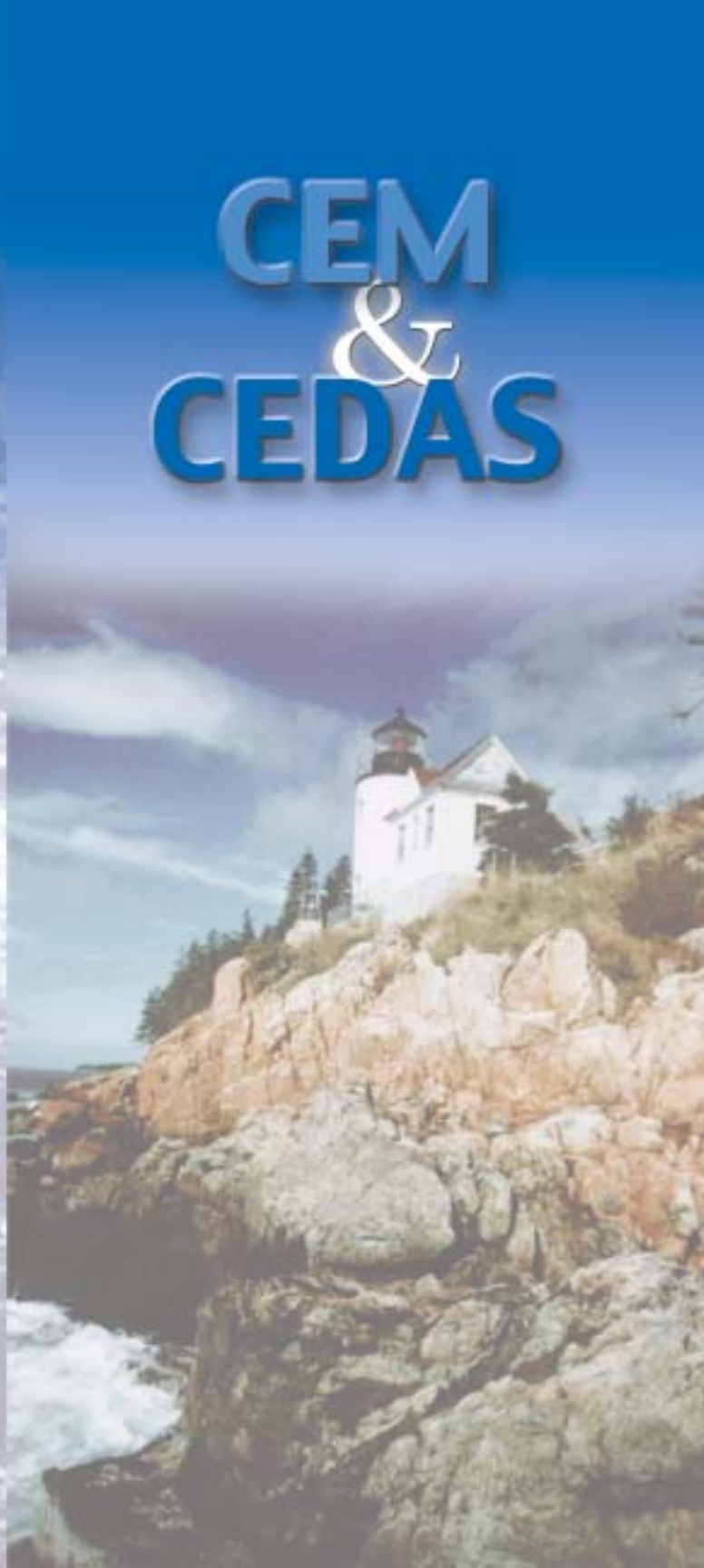
- Coastal tools for the 21st century
- Developed by the Waterways Experiment Station - authorship includes **national and international experts**, practitioners, researchers, consultants, and academicians
- Latest research, techniques, and procedures
- **Metric and English units**
- CD-ROM navigation environment - focus on ease of use
- Produced by Veri-Tech, Inc. under a Cooperative Research and Development Agreement (CRDA) with the Engineer Research and Development Center (ERDC) - Waterways Experiment Station, **Corps of Engineers**, Vicksburg, MS

This software can help you...

- **Products are a must for:** consulting firms; libraries; federal, state and local government agencies; universities; and coastal organizations
- University (library, professor, and student discounts) - **exceptional classroom and research materials**
- Application to planning, engineering design and analysis, construction, and operations & maintenance

**PLEASE SHARE THIS ANNOUNCEMENT
WITH OTHER COLLEAGUES**

CEM & CEDAS



Coastal Engineering Manual (CEM)

Professional Edition

Contents:

- I General Introduction
- II Coastal Hydrodynamics
- III Coastal Sediment Processes
- IV Coastal Geology
- V Coastal Project Planning and Design
- VI Design of Coastal Project Elements

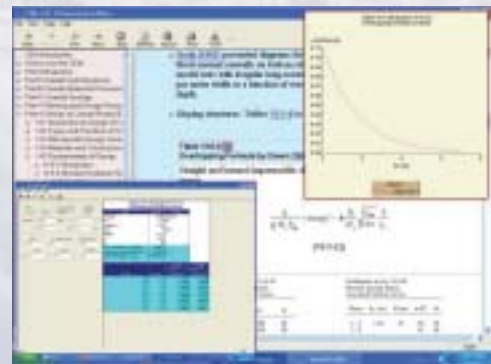
- A comprehensive state-of-the-art manual incorporating tools and procedures to plan, design, construct, and maintain coastal projects.
- Approximately **3,000 pages, if printed** - extensive color photographs
- Metric and English units; fresh and sea water; scientific notation
- **70 programmed example problems and over 400 programmed equations/models**; export, plot, and print capability; and spreadsheet solutions
- Insightful and live / interactive graphic displays
- Hot linked references and comprehensive document search capability - **easy navigation** among text, figures, equations, references and example problems
- Web browser technology, text translated to HTML (not PDF) - variable font size
- **Capture materials for your use**

SBAS (Sediment Budget Analysis System)
computer code included at no cost
on CEM CD-ROM

**New Replacement for the
Corps of Engineers' outdated,
but highly popular,
"Shore Protection Manual"**

- CEM (Parts I-VI)
- **The next generation of the world's most popular coastal manual**
- The basis for future coastal engineering studies throughout the world
- A major update of the Shore Protection Manual (last updated in 1984) which no longer reflects up-to-date technology and knowledge of coastal processes, engineering, and planning
- **Science-based and engineering-based parts**
- Includes technical advances made worldwide
- Technology advances through website downloads or CD-ROM updates

**The CEM is much more
than a manual!**



Veri-Tech, Inc.

P.O. Box 820109
Vicksburg, MS 39182-0109
USA
phone: 601-636-1454
fax: 601-638-5641
info@veritechinc.com
http://www.veritechinc.com

CEDAS

(Coastal Engineering Design and Analysis System)

- For engineers and scientists in the fields of: coastal, ocean, and hydraulic engineering; marine science; oceanography; and geology
- A **comprehensive collection** of coastal engineering design and analysis software developed by or for the Waterways Experiment Station
- Contents range from the **simplified techniques** of the ACES package, **to more sophisticated models** for hydrodynamics, wave propagation, nearshore hydrodynamics, beach processes, and inlet technology
- Pre- and post-processing routines, graphical tools for visualization and animation, grid generation
- Easy to use Windows interface and graphics within a visual development environment
- Buy the full system or only the models you need
- Manuals and reports available on CD-ROM
- **Exceptional HELP files & technical support**

GENERAL ENGINEERING MODULE

- **ACES** (Automated Coastal Engineering System – includes 34 codes)
- **EST** (Empirical Simulation Technique) is a life-cycle approach to risk analysis based on use of historical data used for site-specific studies involving storm and wave impacts.
- **RELIABLE** computes a Level II analysis of the reliability of a structure design—the process of determining risk of damage or probability of failure.

INLET PROCESSES MODULE

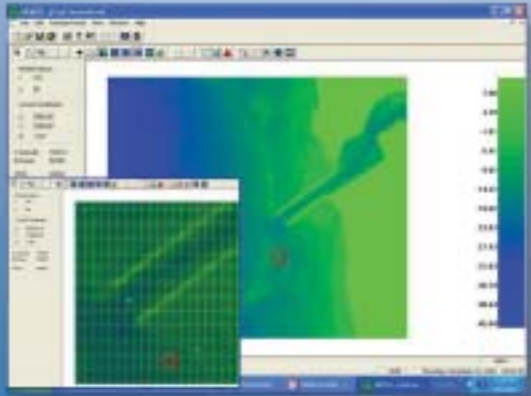
- **NMLong-CW** (Numeric Model for simulating Longshore current – Current Wave interaction)
- **DYNLET** (DYNAMIC behavior of tidal flow at inLETs)

BEACH PROCESSES MODULE

- **SBEACH** (Storm-induced BEACH CHange)
- **BMAP** (Beach Morphology Analysis Package)
- **NEMOS** (Nearshore Evolution Modeling System), includes the following key programs:
 - **GENESIS** (calculates shoreline change primarily due to wave action)
 - **GENESIS_T** (permits tombolo formation in shoreline evolution)
 - **RCPWAVE** (2-D steady-state, monochromatic wave propagation)
 - **STWAVE** (2-D finite-difference representation for simulating near-coast, time-independent spectral wave energy propagation)
 - **SPECGEN** (Used to import, create, or visualize directional spectra in STWAVE)
 - **GRIDGEN** (Creates uniform grids at arbitrary orientations from random bathymetry-topographic data)
 - **WSAV** (Wave Station Analysis & Visualization)
 - **WMV** (Wave Model Visualization)
 - **WWWL** (Waves, Winds, Water Levels editor)
 - **WISPH3** (WIS Phase 3 Wave Transformation)

$$\frac{H}{\Delta D_{n50}} = (K_D \cot \alpha)^{1/3}$$

Companion Coastal Tools for Engineers, Scientists, & Planners



CEDAS & CEM

(Replacement for the highly popular
"Shore Protection Manual")

Visit our website at
<http://www.veritechinc.com>



Veri-Tech, Inc.
P.O. Box 820109
Vicksburg, MS 39182-0109
USA

PRESORTED
STANDARD
U.S. POSTAGE PAID
VICKSBURG, MS
PERMIT NO. 132

COASTAL TOOLS!

